



# Quick Installation Guide

ASW1000S-S2/ASW1500S-S2/ASW2000S-S2  
ASW2500S-S2/ASW3000S-S2/ASW3300S-S2



Android



iOS

## CAUTION

**Risk of burns due to high temperature.**  
Some parts of the enclosure can become hot during operation.

- During operation, do not touch any parts other than the enclosure lid of the product.

## CAUTION

**Risk of injury due to weight of product.**  
Injuries may result if the product is incorrectly handled or dropped while being transported or mounted.

- Transport and lift the product carefully. Take the weight of the product into account.
- Wear suitable personal protective equipment for all work on the product

## 4. Symbols on the label



Beware of a danger zone!  
This symbol indicates that the product must be additionally grounded if additional grounding or equipotential bonding is required at the installation site.



Beware of high voltage and operating current!  
The product operates at high voltage and current. Work on the product must only be carried out by skilled and authorized electricians.



Beware of hot surfaces  
The product may become hot during operation. Avoid contact during operation.



WEEE Designation  
Do not dispose of the product together with household waste. Dispose the product in accordance with local disposal regulations for electronic waste.



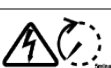
CE marking  
The product complies with the requirements of the applicable EU directives.



Certification mark  
The product has been tested by TÜV and received the quality certification mark.



RCM Mark  
The product complies with the requirements of the applicable Australian standards.



Capacitor discharge  
Danger to life due to high voltages in the product. Do not touch live parts for 5minutes after disconnection from the power sources.



Observe the documentation  
Observe all documentation supplied with the product.

## 5. EU Declaration of Conformity

Within the scope of the EU directives

- Radio Equipment Directive 2014/53/EU (L 153/62-106. May 22. 2014) (RED)
- Restriction of the use of certain hazardous substances 2011/65/EU (L 174/88, June 8, 2011) and 2015/863/EU (L 137/10, March 31,2015) (RoHS)

AlSWEI Technology Co., Ltd. confirms here with that the products described in this document are in compliance with the fundamental requirements and other relevant provisions of the above mentioned directives.

The entire EU Declaration of Conformity can be found at [www.solplanet.net](http://www.solplanet.net).



## 1. GENERAL INFORMATION

This quick installation guide should be read together with the user manual. In case of doubt and uncertainties, the content in the user manual takes precedence over the content in this guide.

The contents of this guide may be updated or revised due to on-going product development and continuous improvement. The information in this guide is subject to change without notice. The latest version of this document and the user manual for installation, commissioning, configuration and decommissioning are to be found in PDF format at [www.solplanet.net](http://www.solplanet.net).

## 2. Intended use

The product must only be used in countries for which it is approved or released by Solplanet.

Use this product only in accordance with the information provided in this documentation, the user manual and with the locally applicable standards and directives. Any other application may cause personal injury or property damage.

The type label must remain permanently attached to the product.

This document does not replace any regional, state, provincial, federal, or national laws, regulations or standards that apply to the installation, electrical safety and use of the product.

## 3. Important safety instructions

The product has been designed and tested strictly according to the international safety requirements. As with all electrical or electronical devices, there are residual risks despite careful construction. To prevent personal injury and property damage and to ensure long-term operation of the product, read this section carefully and observe all safety information at all times.

### DANGER

#### Danger to life due to high voltages of the PV array!

When exposed to sunlight, the PV array generates dangerous DC voltage which is present in the DC conductors and the live components of the product. Touching the DC conductors or the live components can cause to lethal electric shocks. If you disconnect the DC connectors from the product under load, an electric arc may occur leading to electric shock and burns.

- Do not touch non-insulated cable ends.
- Do not touch the DC conductors.
- Do not touch any live components of the product.
- Do not open the product.
- All work on the product must only be carried out by qualified personnel who have read and fully understood all safety information contained in this document and the user manual.
- Disconnect the product from voltage and energy sources and ensure it cannot be reconnected before working on the product.
- Wear suitable personal protective equipment for all work on the product.

### DANGER

#### Danger to life due to electric shock when touching live system components in case of a ground fault!

If a ground fault occurs, parts of the system may still be live. Touching live parts and cables may result in death or lethal injuries due to electric shock.

- Disconnect the product from voltage and energy sources and ensure it cannot be reconnected before working on the device.
- Only touch the insulation of the cables of the PV modules.
- Do not touch any parts of the substructure or frame of the PV array.
- Do not connect PV strings with ground faults to the product.

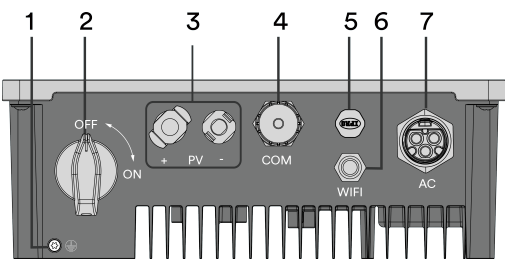
### WARNING

#### Danger to life due to risk of fatal electric shock from measuring device damage caused by overvoltage!

Overvoltage can damage a measuring device and result in voltage being present in the enclosure of the measuring device. Touching the live enclosure of the measuring device results in death or lethal injuries due to electric shock.

- Only use measuring devices with a measurement span equal to or higher than the voltage rating of the product.

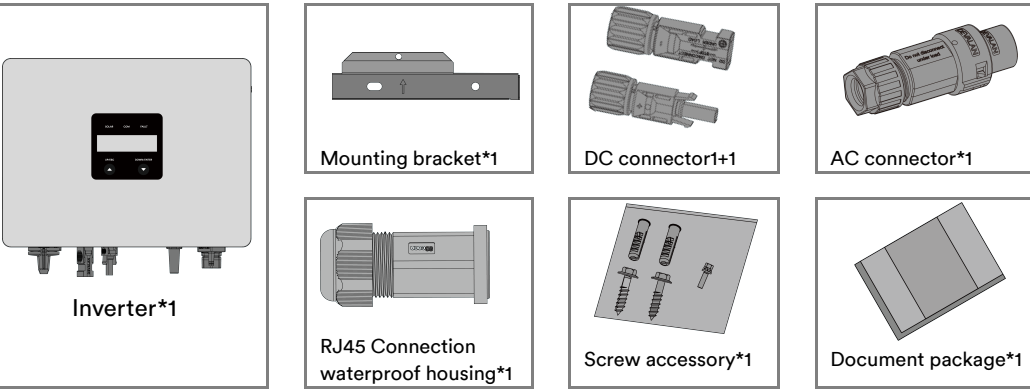
## 6. Overview



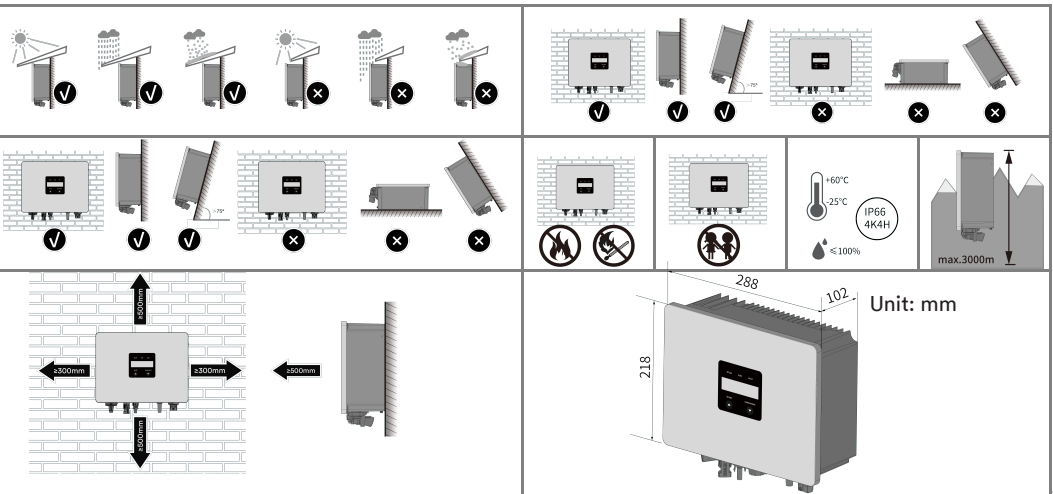
### No. Name

- |   |                                     |
|---|-------------------------------------|
| 1 | Additional grounding screw          |
| 2 | DC-switch                           |
| 3 | DC input port                       |
| 4 | COM: Smart meter communication port |
| 5 | Ventilation valve port              |
| 6 | Wi-Fi antenna por                   |
| 7 | AC output port                      |

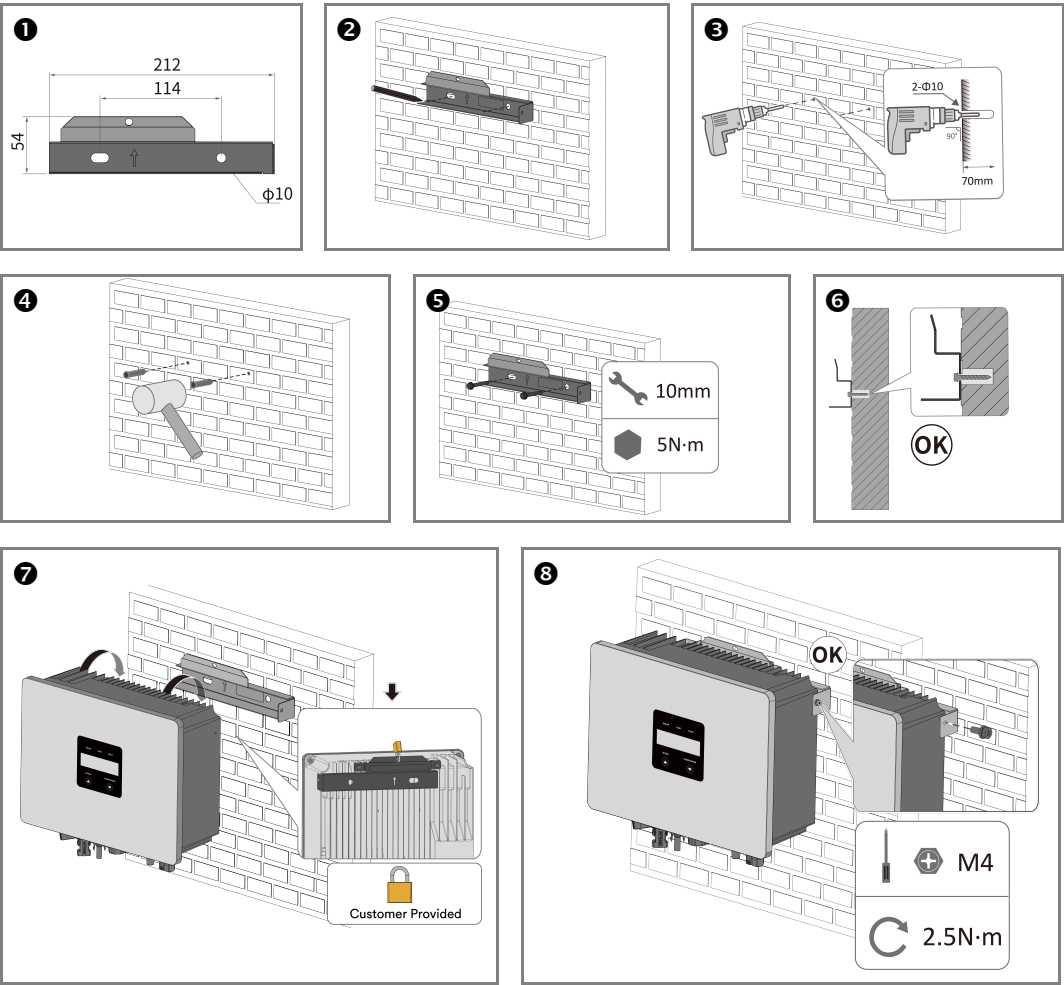
## 7. Scope of Delivery



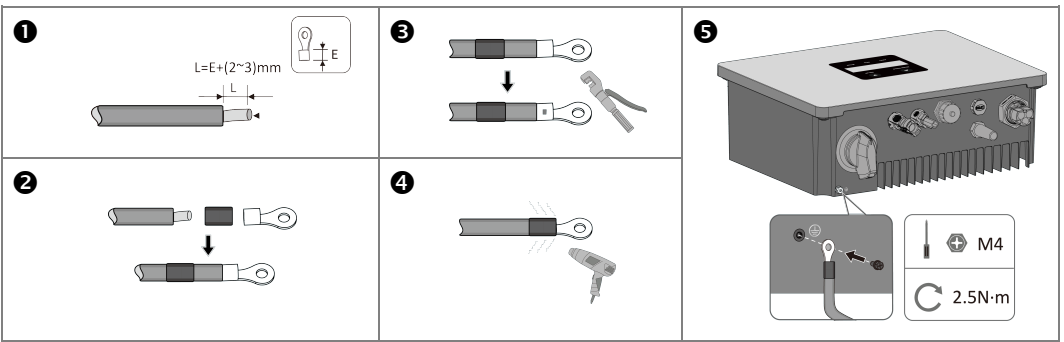
## 8. Mounting Environment



9. Mounting

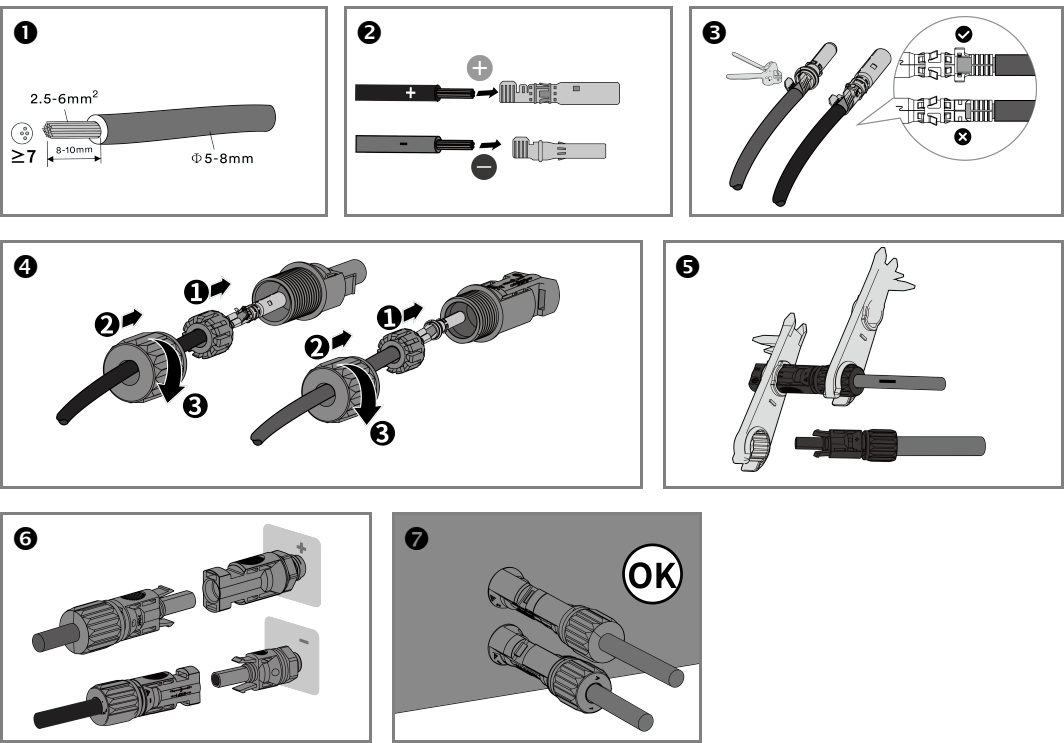


10. Second Protective Grounding

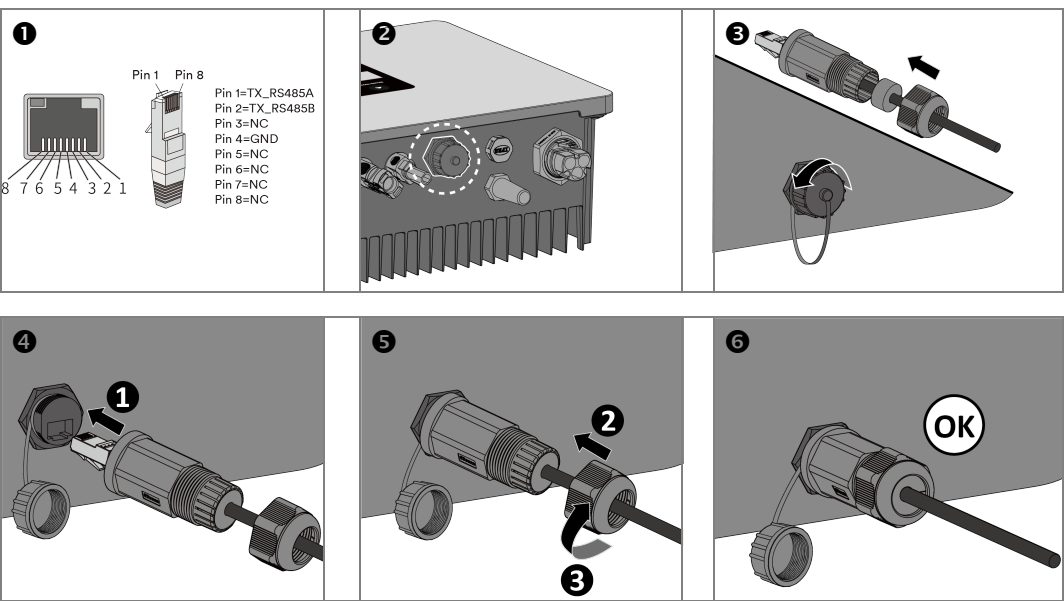


4

12. DC Connection

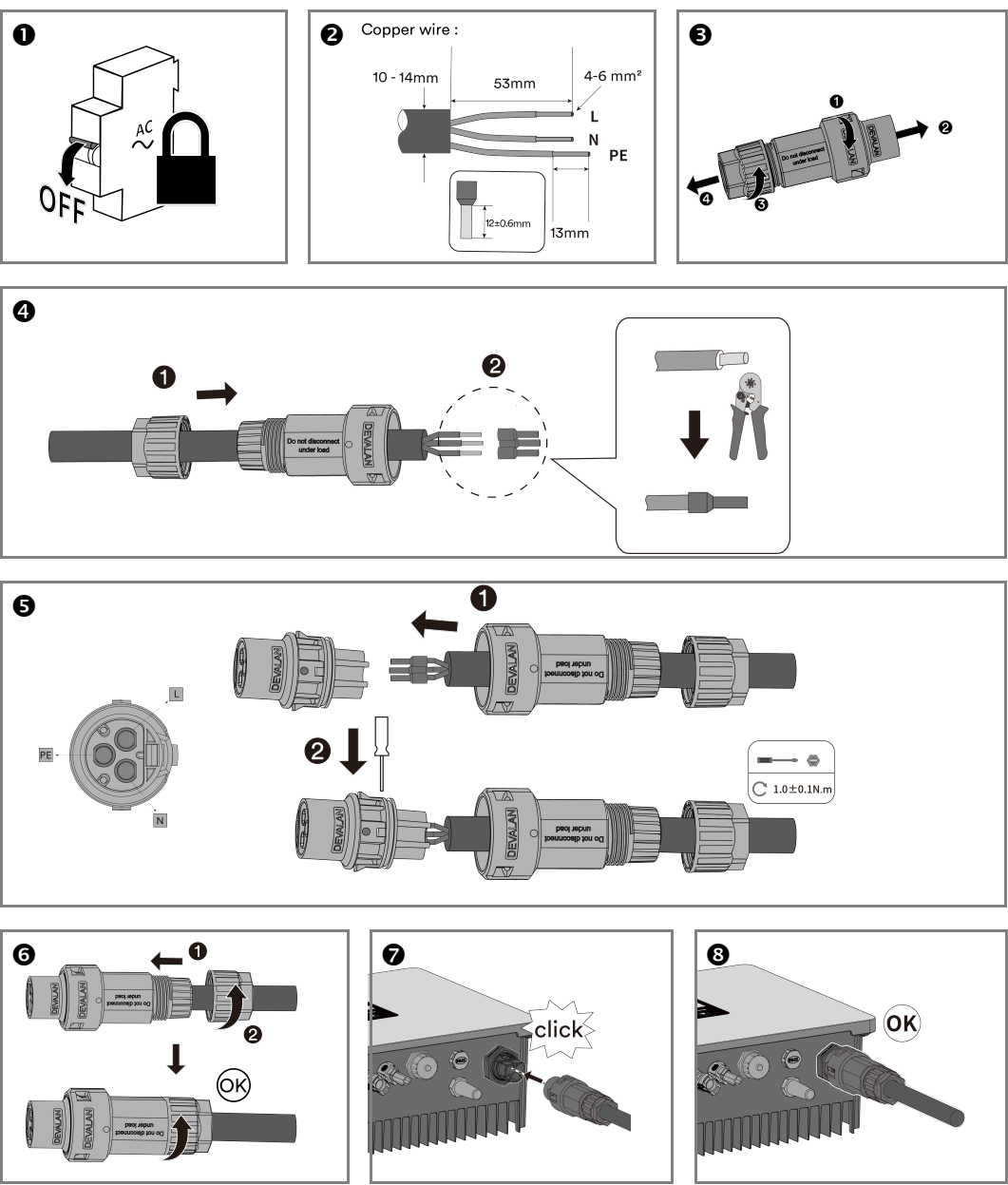


13. COM: Smart meter communication port connection



6

11. AC Connection



5

